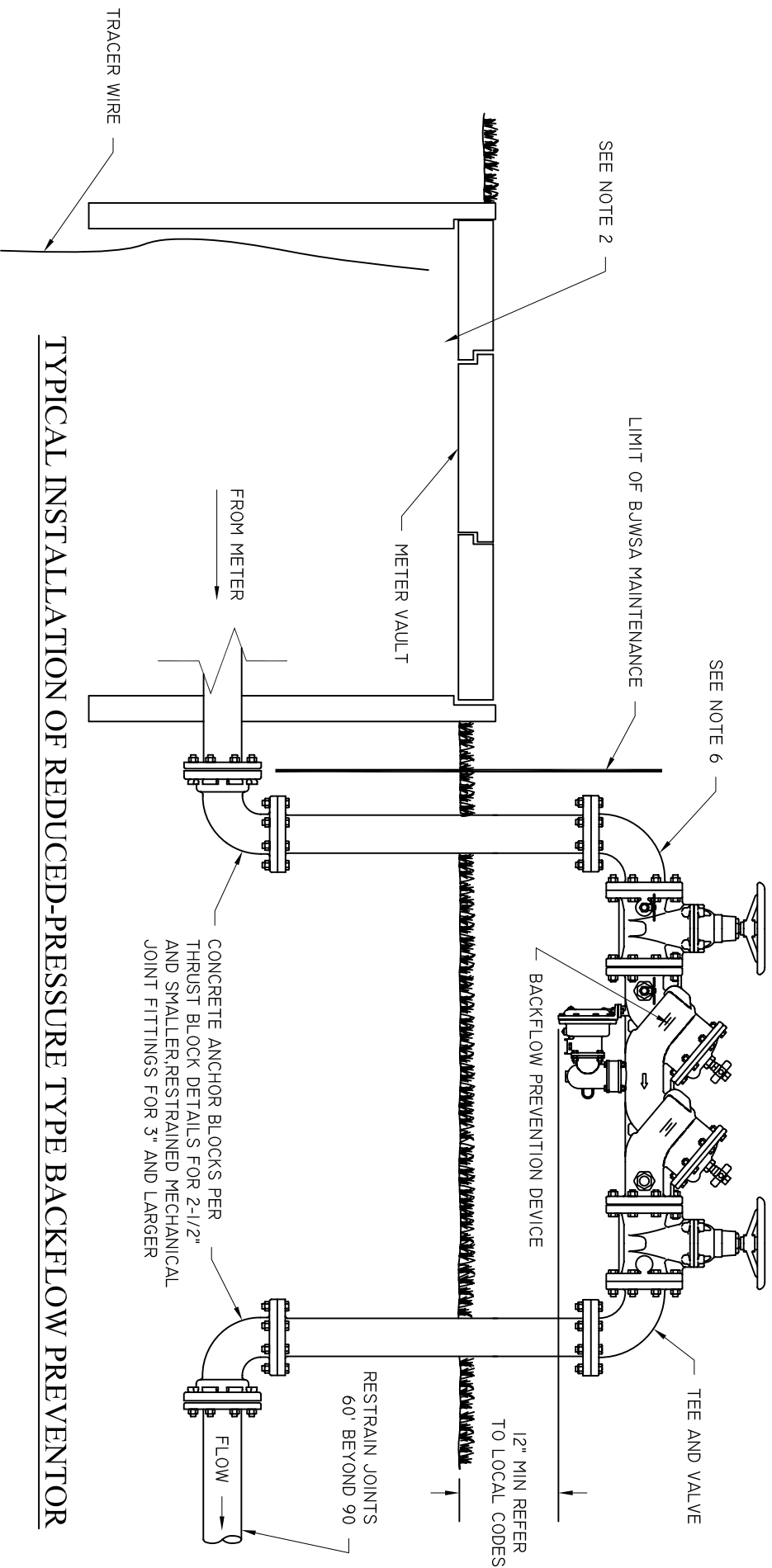


APPENDIX C – WATER STANDARD DETAIL DRAWINGS

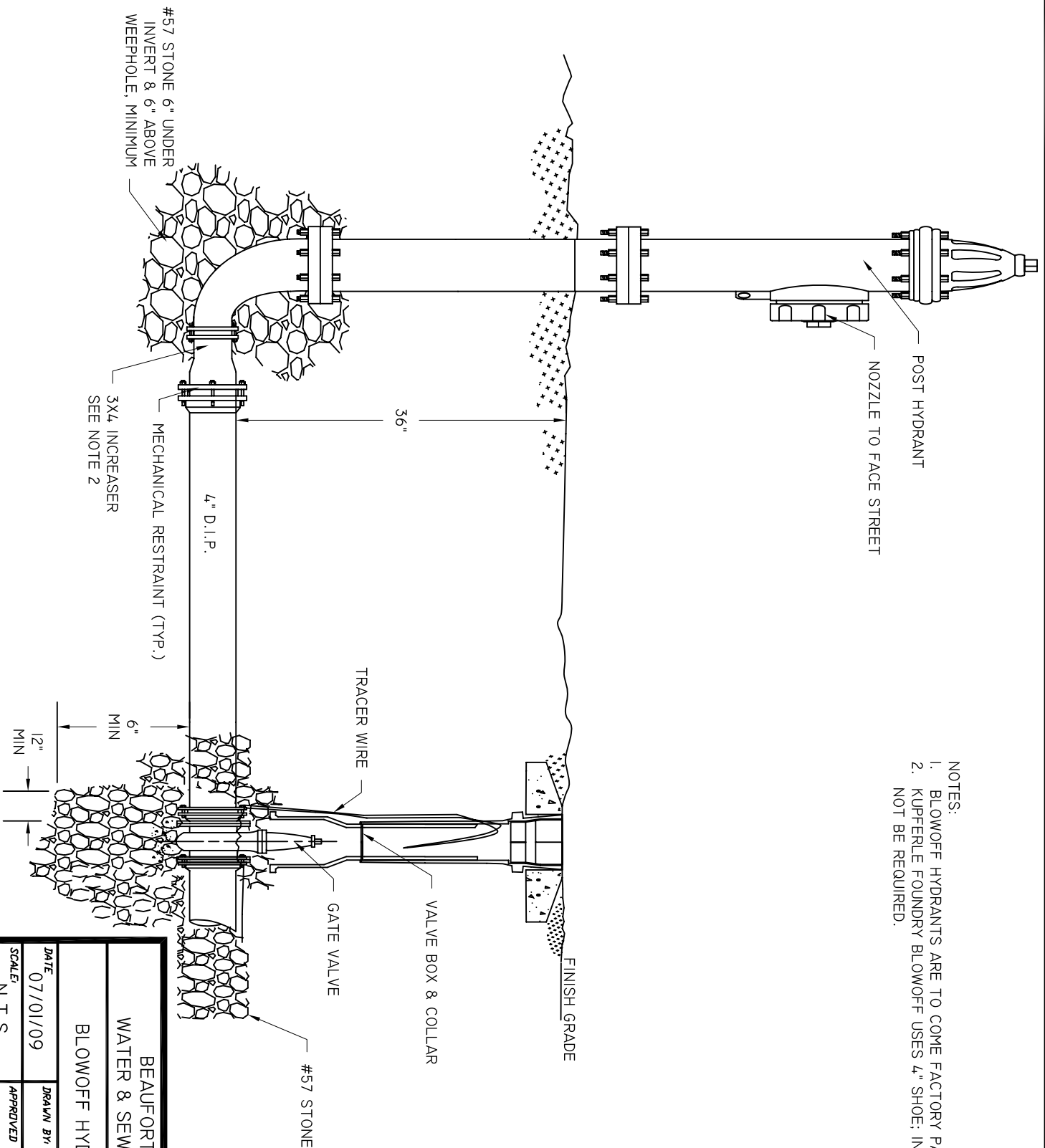
<u>DRAWING NUMBER</u>	<u>TITLE</u>
W-01	Backflow Prevention Detail
W-02	Blow-off Hydrant Detail
W-03	Fire Hydrant - Standard
W-04	Fire Hydrant Detail – Under Ditch
W-05	Jumper Connection Ditch
W-06	Meter Vault Detail - Large
W-07	Water Line Crossing Detail
W-08	Water Service – Plan View
W-09	Water Service Profile
W-10	Water Sampling Station
W-11	Meter Bank Detail; 6 Meter Max



TYPICAL INSTALLATION OF REDUCED-PRESSURE TYPE BACKFLOW PREVENTOR

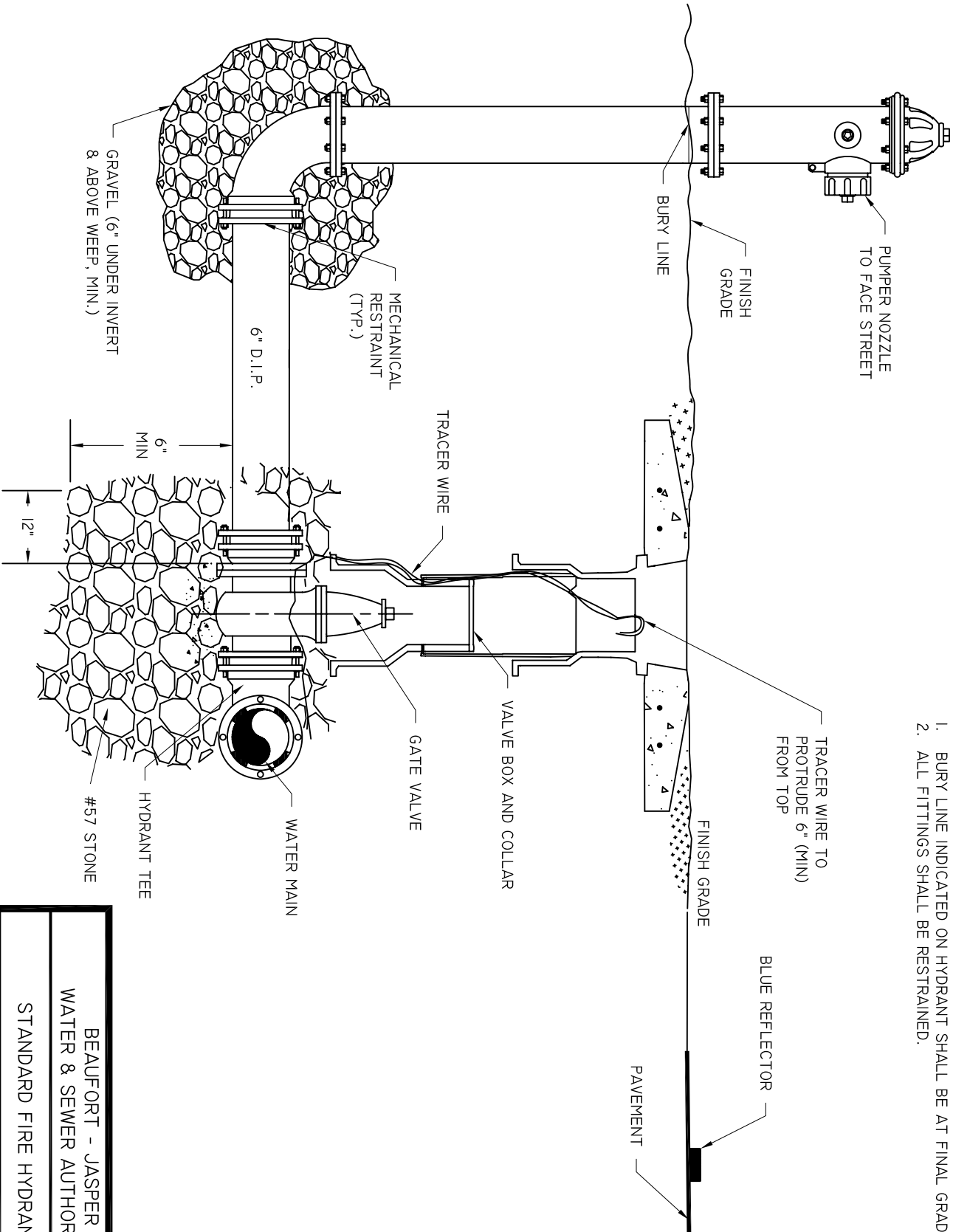
- NOTES:
1. REDUCED-PRESSURE BACKFLOW PREVENTION DEVICES SHALL BE REQUIRED FOR ANY SERVICE WHERE TOXIC MATERIALS ARE USED OR WHERE POSITIVE PROTECTION FOR THE PUBLIC WATER SUPPLY IS REQUIRED. TYPICAL APPLICATIONS INCLUDE: HOSPITALS, MEDICAL & DENTAL LABS, MORTUARIES, INDUSTRIAL PLANTS, DRY CLEANERS, IRRIGATION SYSTEMS, OR AS DETERMINED BY BUWSA.
 2. SEE SPECIFIC METER DETAIL FOR MORE INFORMATION.
 3. BACKFLOW PREVENTION DEVICES SHALL BE INSTALLED ADJACENT TO AND ON PROPERTY SIDE OF SIDEWALK WHERE APPLICABLE. WHERE NO SIDEWALKS EXISTS, THE ASSEMBLY SHALL BE INSTALLED BEFORE ANY BRANCH AND AS CLOSE AS POSSIBLE TO THE WATER METER LOCATION. FINAL LOCATION TO BE APPROVED BY BUWSA PRIOR TO INSTALLATION.
 4. SCREENING AND LANDSCAPING PLACES AROUND DEVICE SHALL ALLOW FOR ACCESS BY BUWSA PERSONNEL.
 5. FREEZE PROTECTION IS THE OWNERS RESPONSIBILITY.
 6. PIPING AND FITTINGS THROUGH 2 1/2" SHALL BE SCHD 40 GALVANIZED STEEL. PIPING AND FITTINGS 3" AND LARGER SHALL BE FLANGED DUCTILE IRON.
 7. REFER TO SCDHEC APPROVED LIST OF BACKFLOW PREVENTION DEVICES.
 8. DUAL CHECK VALVES MAY BE INSTALLED IN UNDERGROUND VAULT (PRIOR APPROVAL BY BUWSA REQUIRED).

BEAUFORT - JASPER		
WATER & SEWER AUTHORITY		
BACKFLOW PREVENTION DETAIL		
DATE 07/01/09	DRAWN BY BMC	DRAWING # W-01
SCALE N.T.S.	APPROVED BY ERS	



- NOTES:
1. BLOWOFF HYDRANTS ARE TO COME FACTORY PAINTED WHITE.
 2. KUPFERLE FOUNDRY BLOWOFF USES 4" SHOE; INCREASER WILL NOT BE REQUIRED.

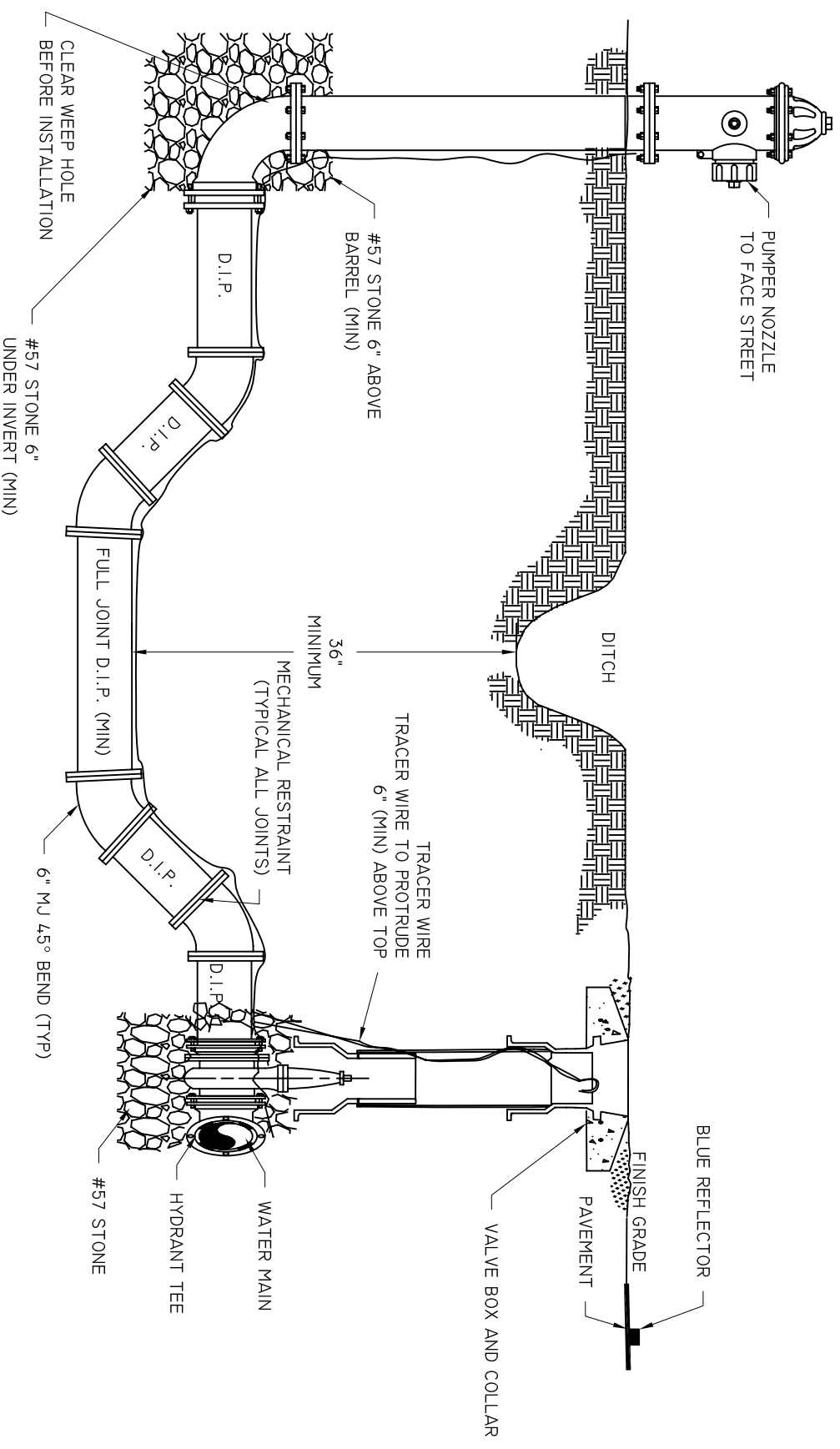
BEAUFORT - JASPER			
WATER & SEWER AUTHORITY			
BLOWOFF HYDRANT DETAIL			
DATE	07/01/09	DRAWN BY	BMC
SCALE	N.T.S.	APPROVED BY	ERS
DRAWING #			W-02



- NOTES:
1. BURY LINE INDICATED ON HYDRANT SHALL BE AT FINAL GRADE.
 2. ALL FITTINGS SHALL BE RESTRAINED.

BEAUFORT - JASPER		
WATER & SEWER AUTHORITY		
STANDARD FIRE HYDRANT		
DATE	DRAWN BY	DRAWING #
07/01/09	BMC	W-03
SCALE	APPROVED BY	
N.T.S.	ERS	

- NOTES:
1. BURY LINE INDICATED ON HYDRANT SHALL BE AT FINAL GRADE.
 2. ALL FITTINGS SHALL BE RESTRAINED.

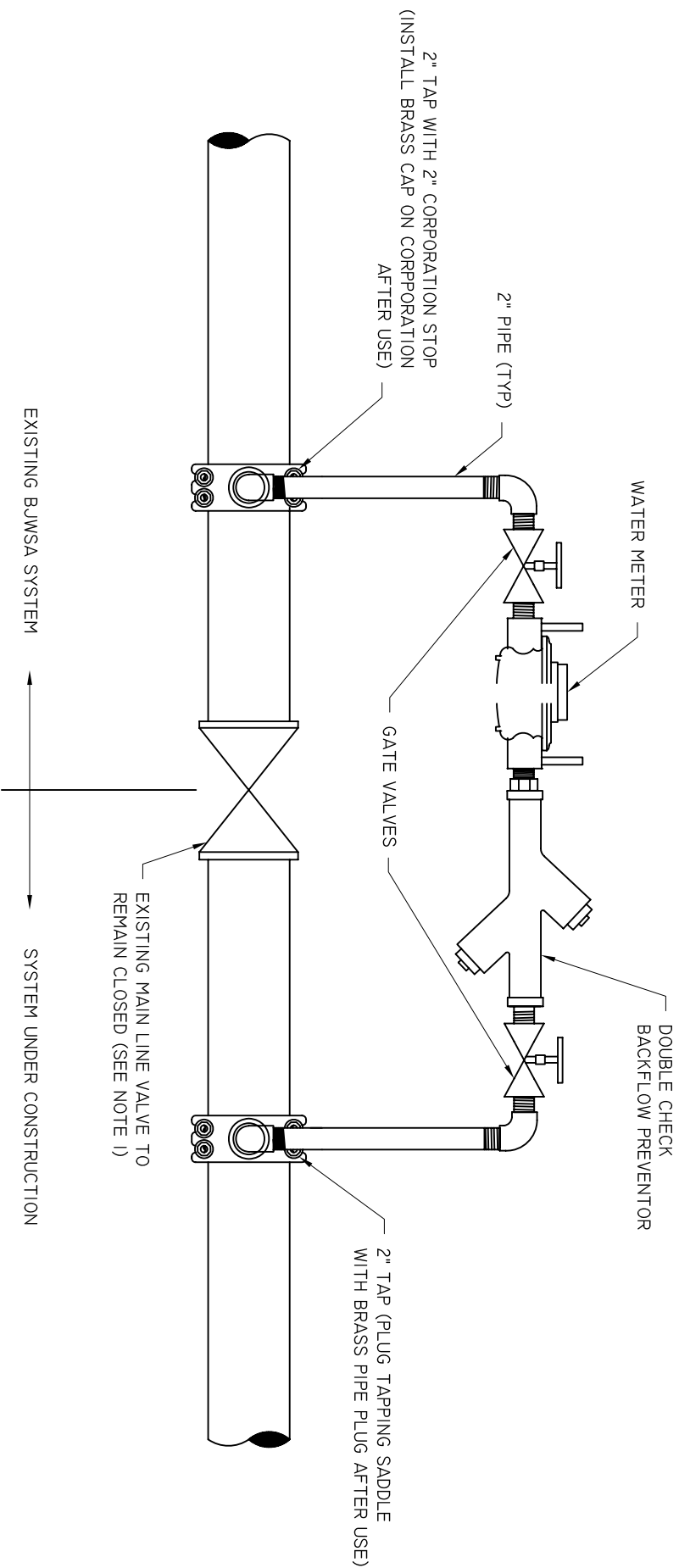


BEAUFORT - JASPER
WATER & SEWER AUTHORITY

FIRE HYDRANT DETAIL UNDER DITCH

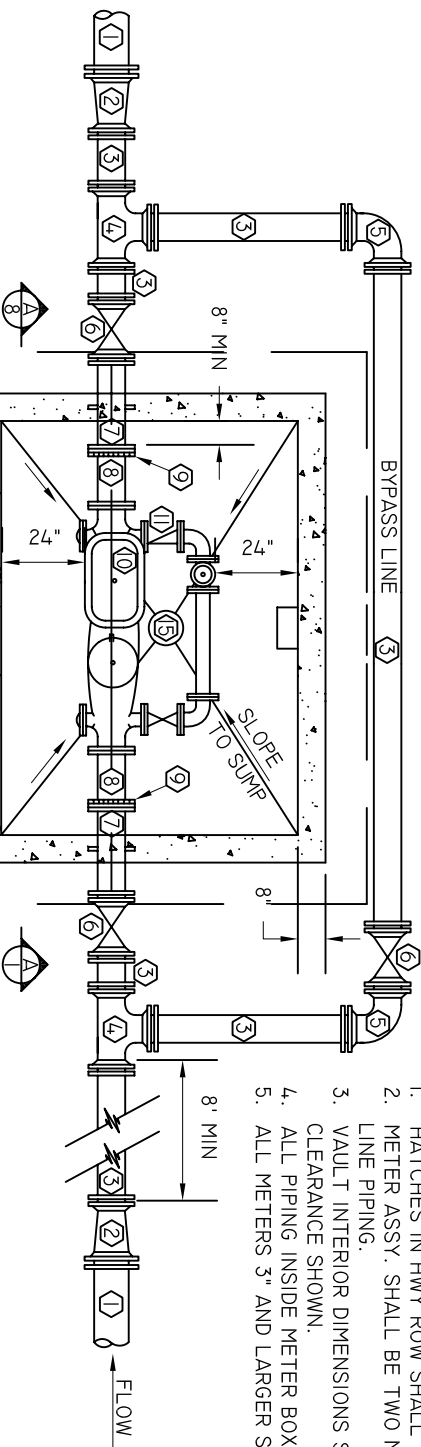
DATE 07/01/09	DRAWN BY BMC
SCALE N.T.S.	APPROVED BY ERS

DRAWING #
W-04



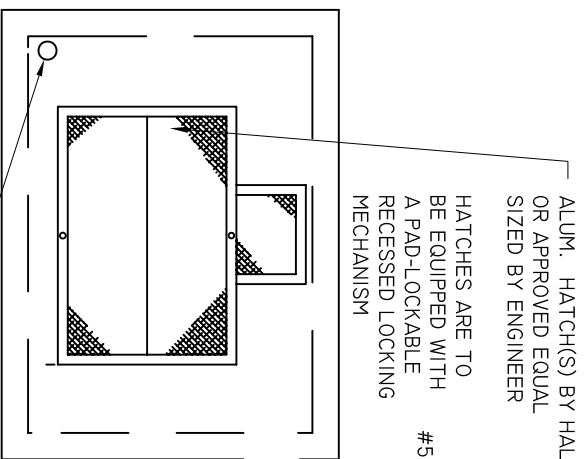
- NOTES:
1. MAIN LINE VALVE SHALL REMAIN CLOSED AT ALL TIMES UNTIL PERMIT TO OPERATE IS ISSUED BY SC DHEC. MAINLINE VALVE SHALL ONLY BE OPERATED BY BJWSA PERSONNEL. VIOLATION OF THIS POLICY IS PUNISHABLE BY A FINE OF NOT LESS THAN \$500 PLUS ESTIMATED WATER USAGE AND POSSIBLE CRIMINAL PROSECUTION.
 2. ALL WATERLINE EXTENSIONS MUST CONTAIN A JUMPER CONNECTION FOR FILLING/CHLORINATION REQUIREMENTS.
 3. METER AND BACKFLOW ASSEMBLY MUST BE OBTAINED FROM BJWSA.
 4. TAPING SADDLES AND CORPORATION STOPS SHALL COMPLY WITH BJWSA SPECIFICATIONS.
 5. ALL TAPS ON MAINLINE SHALL BE HORIZONTAL.

BEAUFORT - JASPER			
WATER & SEWER AUTHORITY			
JUMPER CONNECTION DETAIL			
DATE	DRAWN BY	BMC	DRAWING #
07/01/09			W-05
SCALE	APPROVED BY	ERS	
N.T.S.			



- NOTES:
1. HATCHES IN HWY ROW SHALL BE H20 TRAFFIC RATED.
 2. METER ASSY. SHALL BE TWO NOMINAL PIPE SIZES SMALLER THAN MAIN LINE PIPING.
 3. VAULT INTERIOR DIMENSIONS SHALL BE SIZED TO PROVIDE THE MINIMUM CLEARANCE SHOWN.
 4. ALL PIPING INSIDE METER BOX SHALL BE DIP.
 5. ALL METERS 3" AND LARGER SHALL COMPLY.

PLAN VIEW
METER VAULT ABOVE TOP SLAB



ALUM. HATCH(S) BY HALLIDAY OR APPROVED EQUAL SIZED BY ENGINEER

HATCHES ARE TO BE EQUIPPED WITH A PAD-LOCKABLE RECESSED LOCKING MECHANISM

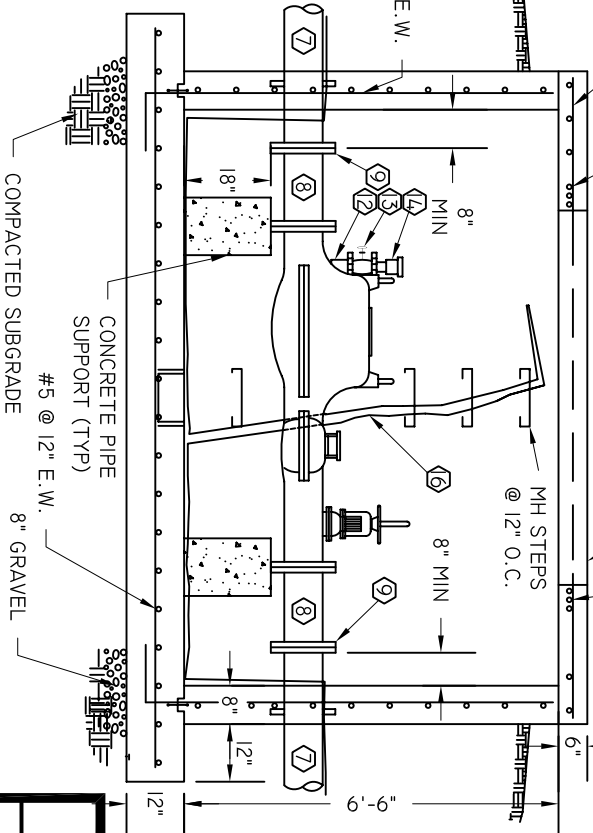
#5 @ 12" E.W.

#5 @ 9" O.C.

3 EXTRA #5 ALL AROUND OPENING

ALUMINUM HATCH

MH STEPS @ 12" O.C.



CONCRETE PIPE SUPPORT (TYP)

#5 @ 12" E.W.

COMPACTED SUBGRADE

8" GRAVEL

SECTION



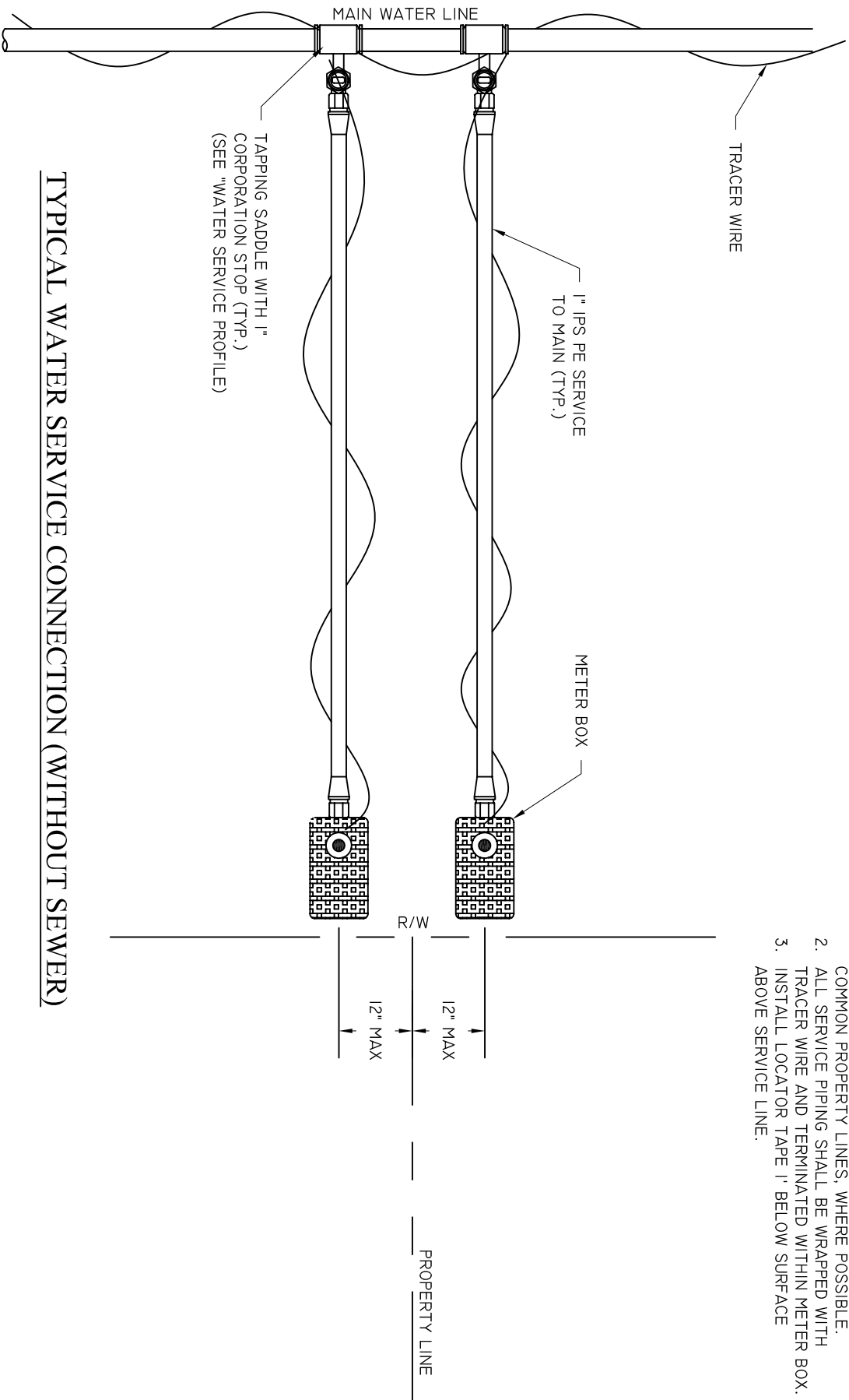
PLAN VIEW
METER VAULT ABOVE TOP SLAB

BEAUFORT - JASPER			
WATER & SEWER AUTHORITY			
10" AND GREATER METER DETAIL			
DATE	DRAWN BY	BMC	DRAWING #
07/01/09			W-06
SCALE	APPROVED BY	ERS	
N.T.S.			

BEAUFORT - JASPER
WATER & SEWER AUTHORITY

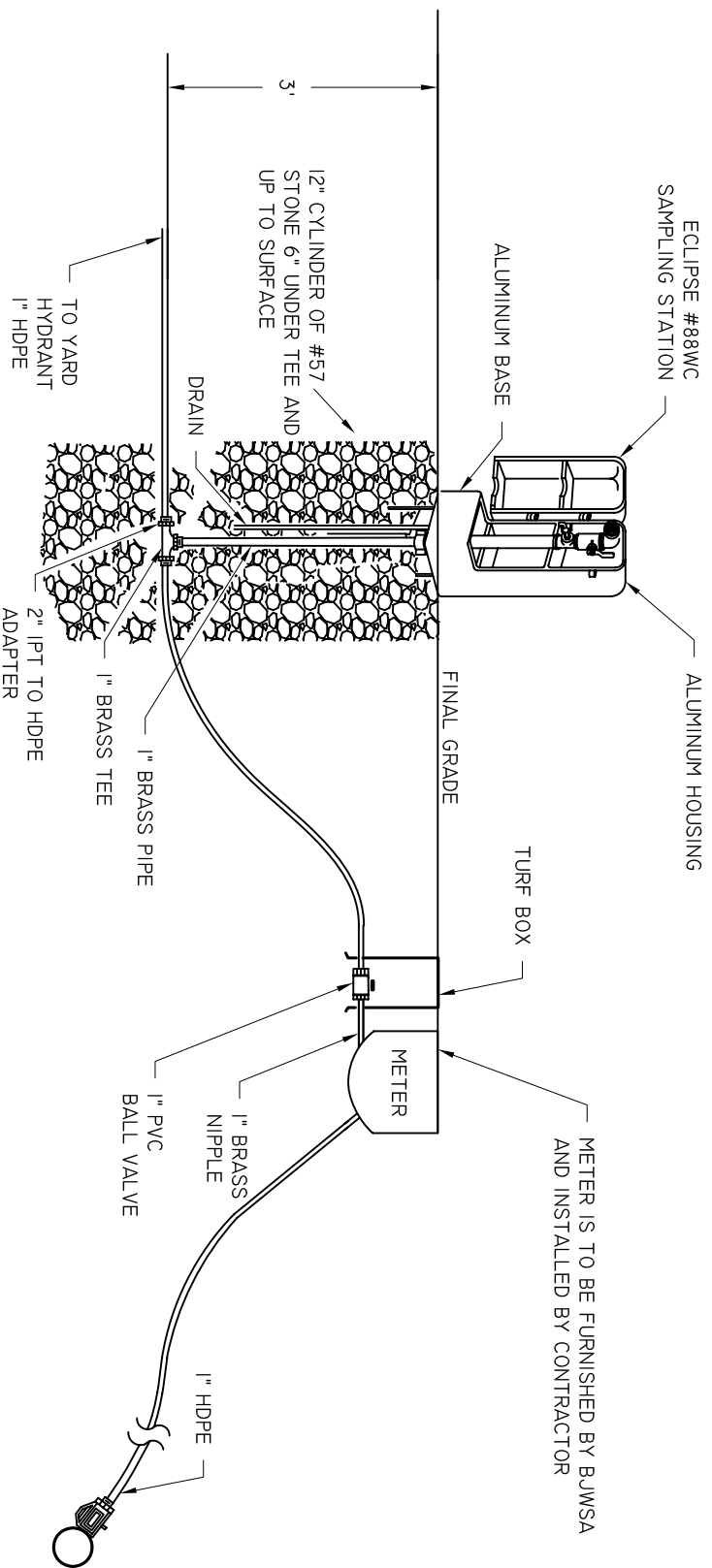
RESERVED

DATE	DRAWN BY	DRAWING #
07/01/09	BMC	W-07
SCALE	APPROVED BY	
N.T.S.	ERS	



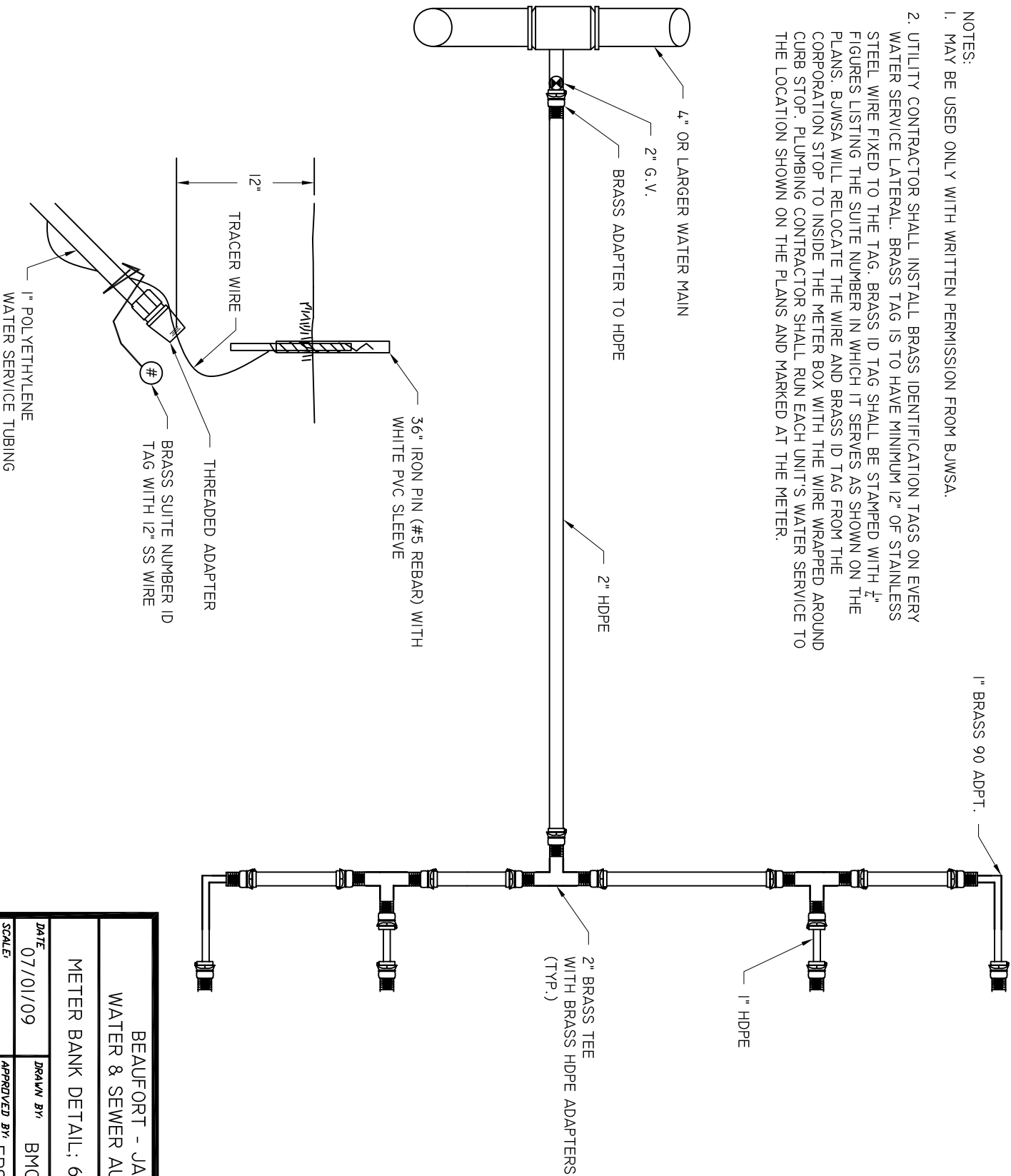
- NOTES:
1. WATER SERVICES SHALL BE INSTALLED TO COMMON PROPERTY LINES, WHERE POSSIBLE.
 2. ALL SERVICE PIPING SHALL BE WRAPPED WITH TRACER WIRE AND TERMINATED WITHIN METER BOX.
 3. INSTALL LOCATOR TAPE 1' BELOW SURFACE ABOVE SERVICE LINE.

BEAUFORT - JASPER			
WATER & SEWER AUTHORITY			
WATER SERVICE PLAN VIEW			
DATE	07/01/09	DRAWN BY	BMC
SCALE	N.T.S.	APPROVED BY	ERS
DRAWING #			W-08



BEAUFORT - JASPER			
WATER & SEWER AUTHORITY			
WATER SAMPLING STATION			
DATE	DRAWN BY	BMC	DRAWING #
07/01/09			W-10
SCALE	APPROVED BY	ERS	
N.T.S.			

- NOTES:
1. MAY BE USED ONLY WITH WRITTEN PERMISSION FROM BUWSA.
 2. UTILITY CONTRACTOR SHALL INSTALL BRASS IDENTIFICATION TAGS ON EVERY WATER SERVICE LATERAL. BRASS TAG IS TO HAVE MINIMUM 12" OF STAINLESS STEEL WIRE FIXED TO THE TAG. BRASS ID TAG SHALL BE STAMPED WITH $\frac{1}{4}$ " FIGURES LISTING THE SUITE NUMBER IN WHICH IT SERVES AS SHOWN ON THE PLANS. BUWSA WILL RELOCATE THE WIRE AND BRASS ID TAG FROM THE CORPORATION STOP TO INSIDE THE METER BOX WITH THE WIRE WRAPPED AROUND CURB STOP. PLUMBING CONTRACTOR SHALL RUN EACH UNIT'S WATER SERVICE TO THE LOCATION SHOWN ON THE PLANS AND MARKED AT THE METER.



BEAUFORT - JASPER
WATER & SEWER AUTHORITY

METER BANK DETAIL; 6 METER MAX

DATE	DRAWN BY	BMC
07/01/09		
SCALE	APPROVED BY	ERS
N.T.S.		

DRAWING #
W-11